

The Rise of Dictatorships



What's going on in Europe?

- * North America - Depression
- * Other countries experiencing social and political upheaval
- * Communism - public ownership
- * Strong military
- * Leaders became dictators once in power

Global Impacts of the Great Depression

examples:

Germany

Asia

Russia

GERMANY

Massive inflation due to printing too much money

Had to pay 32 billion for reparations

Price of ~~basic~~ basic goods continued to rise

Economy was affected more because it was already weak

Inability to pay reparations led to world depressions

Money so worthless they burned it for warmth

ASIA

- Developed a strong manufacturing industry after WWI.
- Tariff barriers & decline of int. trade during Dep. Affected Japan's economy.
- Firms in Asia responded by cutting their workforce and reducing wages.
- In Japan, unemployment & poverty rose, affecting working class.

RUSSIA

- revolted in a civil war in 1917
- Soviet Union was formed
- people thought communism worked better than the capitalist system
- people paid price because of ruthless dictatorship
- robbed people - Joseph Stalin
 - ↳ many deaths
 - ↳ economic/agricultural policies
- In 1922, Russia joined the Soviet Union.

Josef Stalin

- * Took over after Lenin's death
- * Soviet Union
- * Ruthless and cruel
- * Agricultural and economic policies resulted in the death of millions of Soviet workers
- * Created **totalitarian** state
- * every aspect of lives was controlled by government



Benito Mussolini

IL Duce “ The Leader”

- * Came to power 1922
- * Italy
- * Created **fascist** government
- * Opposed to democracy
- * Nationalistic
- * Rely on military
- * Control all media and use propaganda



Germany after the war

- * Angry about the terms of the Treaty of Versailles
- * Economy was ruined
- * Massive **inflation**
- * Value of currency decreased - costs increased
- * Britain, France and the U.S. gave better terms for reparations
- * Stock Market crash in 1929 hit Germany harder than most countries



GERMAN MARK

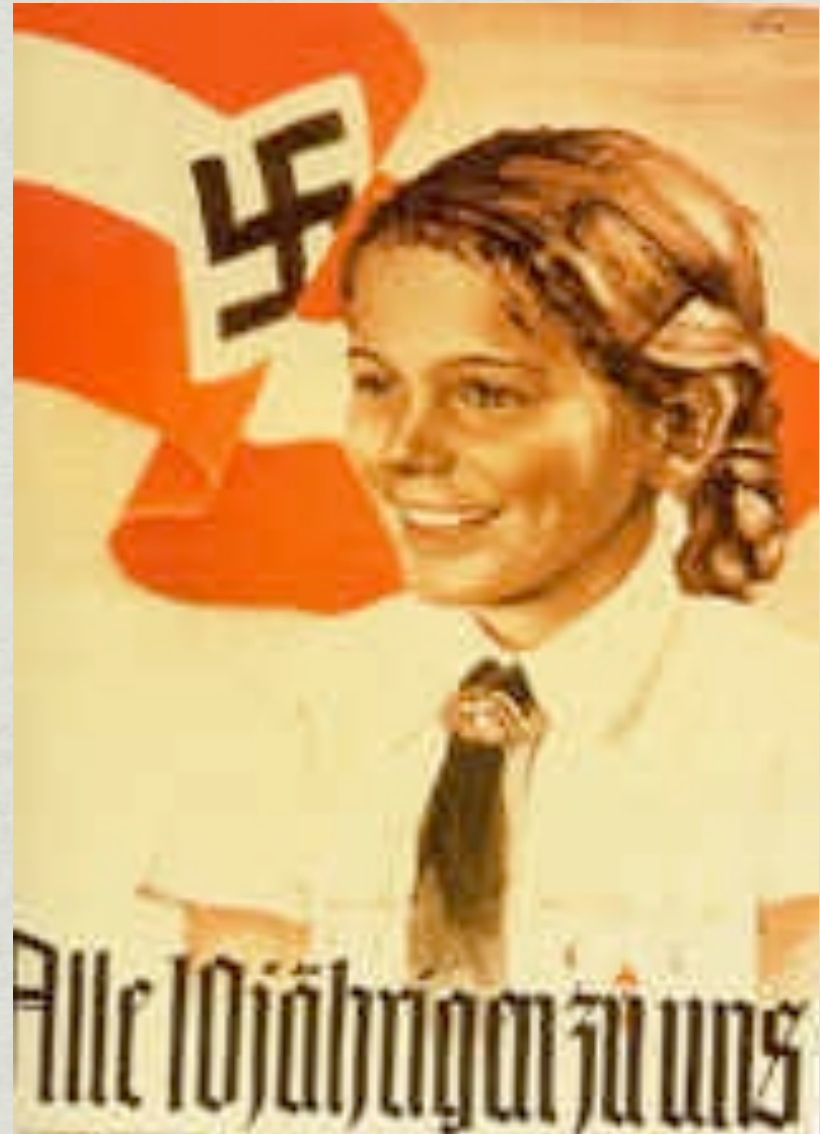
Hitler Comes to power

- * Hitler and the Nazi Party offered solution to Depression
- * 1933 Hitler became Chancellor
- * Stopped all reparation payments
- * Massive expansion of armed forces
- * Created massive public works- Autobahn



Taking Control

- * Nazi's abolished all political parties
- * Trade unions were banned
- * Ruled through intimidation and fear
- * Racism: Germans "Master Race"
- * Persecuted: Jews, Slavs, Gypsies, Mentally ill, Homosexuals
- * Prohibited from schools, jobs, government



Kristallnacht



- ✱ November 9, 1938
- ✱ “Crystal Night”
- ✱ Nazi mobs attacked Jewish businesses
- ✱ Established concentration camps - led to the Holocaust

Road to War

- * 1931 - Japan invades Manchuria
- * League of Nations was unable to protect Manchuria
- * Japan withdraws from League of Nations
- * 1935 Italy invades Abyssinia (Ethiopia)
- * League of Nations imposes sanctions - not oil
- * France/Britain didn't want to punish Italy (balance of power, support against Germany)



JAPANESE TANK MANCHURIA

Germany on the Offensive

- * 1936 German troops enter the Rhineland and were not opposed by the League of Nations
- * General Franco with the help of Hitler and Mussolini takes over Spain
- * Canadian volunteers go to Spain to fight fascism
- * Mackenzie-Papineau Battalion
- * Dr. Norman Bethune was among them



The Policy of Appeasement

- * Make concessions to Hitler to avoid war
- * Made Hitler bolder - “cross this line”
- * March 1938 Took over Austria
- * Sept 1938 Britain and France O.K.'d Hitler's request to take over the Sudetenland In Czechoslovakia



World War II



- * March 1939
Germany took all of
Czechoslovakia
- * Hitler signs non-
aggression pact with
The Soviet Union
- * Germany / Soviet
Union agree to split
Poland
- * Sept 1 1939
Germany invades
Poland
- * Britain and France
order Hitler out -
Germany ignores
order
- * Sept 3 1939 War is
declared